

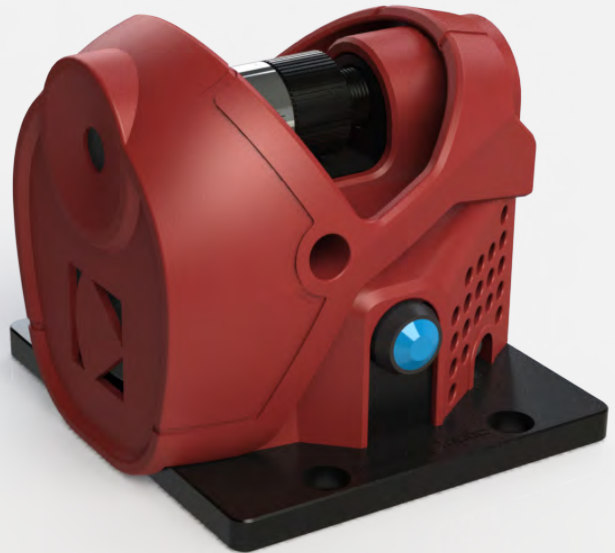
HINA

HIGH NA
LIGHT SOURCE

USABLE
FOR 400 - 900 nm

COMPACT
AND VERSATILE

EASY
TO USE



High-numerical aperture light source module with temporally averaged output wavefront for optical metrology

Specifications

- Gaussian intensity profile, 18° FWHM
- 40° (NA=0.34) with intensity contrast of 10
- Wavefront error <15nm RMS from -40° to +40°, excluding tilts and focus
- Possible input wavelengths in the 400-900 nm range with FC/PC single-mode fiber interface
- Compatible with Imagine Optic laser diode light source or SMLS
- 12V power supply
- Metric mounting holes
- L (111.3mm) x W (114.0mm) x H (98.4mm)

Example of application A point source for wavefront characterization of a microscope objective

Contact us for more details: contact@imagine-optic.com or +33 1 64 86 15 60

www.imagine-optic.com