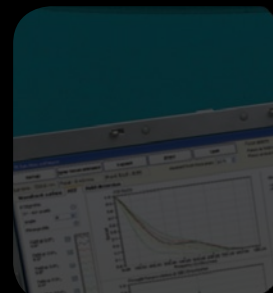


SL-SysTM neo

The first turnkey solution for the complete characterization of miniature optical components with pupils ranging from 1.5–12 mm in diameter - regardless of their numerical aperture (NA).

- fully automated
- compact, space saving design
- precision wavefront characterization
- BFL, EFL, chromatism, field curvature, distortion, vignetting, relative illumination
- 3D and through-focus MTF



Imagine Optic SA (main office)

18 rue Charles de Gaulle
91400 Orsay France

Telephone: +33 (0)1 64 86 15 60

Fax: +33 (0)1 64 86 15 61

E-mail: contact@imagine-optic.com

Imagine Optic, Inc. (North America)

Cambridge Innovation Center

One Broadway, 14th floor

Cambridge, MA 02142, USA

Telephone: 1-617-401-2198

Fax: 1-617-930-9818

2415 Third Street

San Francisco, CA 94107

Telephone: 1-415-525-5557

Fax: 1-415-525-5558

E-mail: contact_us@imagine-optic.com

COSINGO (Imagine Optic Spain SL)

Mediterranean Technology Park

Av. del Canal Olímpic s/n

08860 Castelldefels (Barcelona) Spain

Telephone: +34 935 534 148

Fax: +34 935 534 000

E-mail: info@cosingo.com



SL-SystemTM neo

Total precision wavefront characterization of miniature optics and objectives that allows you to measure aberrations, back focal length (BFL), effective focal length (EFL), chromatism, field curvature, distortion, vignetting, relative illumination as a function of the field, calculate the 3D MTF, and, even more, the MTF through-focus for all measured points in the field as well as determine the best focal plane.

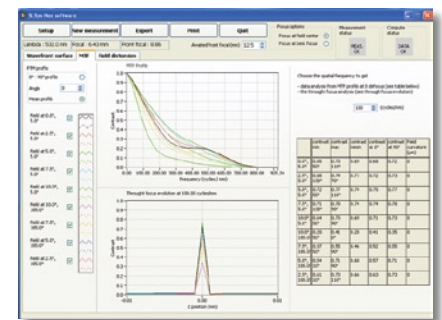
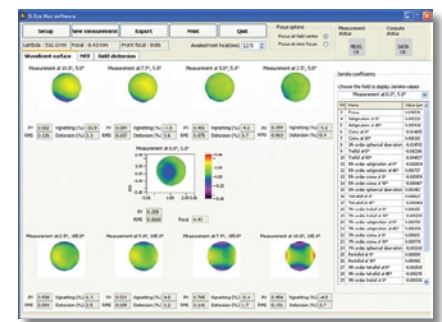


The SL-SystemTM neo is a unique lens characterization solution designed for industrial R&D programs and for production line quality control. Based on Imagine Optic's industry leading HASOTM wavefront sensor technology, the SL-System neo is the only commercially available system that enables you to completely characterize convergent (positive power) optical components with pupil diameters ranging from 1.5-12 mm*, of any numerical aperture (NA) and over the entire field of view.

One of the many advantages of the SL-System neo is its ability to precisely measure the optical element's aberrations as wavefront errors over the entire field of view and/or at any point therein. Contrary to systems that only provide simple Modulation Transfer Function (MTF) data, the precision wavefront data furnished by the SL-System neo enables you to move beyond rudimentary good/bad evaluation and into the domain of complete optical component analysis in order to identify the source of eventual problems.

In addition to wavefront aberrations, only the SL-System neo offers a 3-dimensional MTF measurement on all of the azimuths simultaneously. For the first time, you not only have access to the standard tangential and sagittal MTF curves on a single point, but equally to every other azimuth of the measured field in addition to the averaged MTF of all azimuths.

Lenses or objectives are easily loaded into the SL-System neo and users characterize the element via a fully-automated Windows XP interface that provides instant access to a host of valuable data. The SL-System neo ensures precision measurements in part thanks to the meticulous optical conjugation between the wavefront sensor's measurement plane and the measured element's pupil. Its space-saving vertical design houses a dual wavelength HASO wavefront sensor functioning at 532 and 635 nm, and with microlens array resolutions' of either 32x40 (SL-System - neo 32) or 76x100 (SL-System - neo 76).



Key measurement characteristics include:

- $\pm 45^\circ$ field angle
- $\lambda/100$ aberration measurement sensitivity
- better than 0.005 MTF measurement sensitivity
- 1000 lp/mm maximum MTF frequency acquisition (automatically adjusted)
- better than 0.5% focal measurement sensitivity

For any lens or assembly between 1 - 12 mm in diameter		
	SL-System neo 32	SL-System neo 76
Beam expander 2x	1.5 - 2.3 mm	1.5 - 4.0 mm
Beam expander 1.5x	2.0 - 3.0 mm	1.5 - 5.4 mm
Beam expander 1x	3.0 - 4.5 mm	2.3 - 8.0 mm
Beam expander 0.67x	4.5 - 6.7 mm	3.4 - 12.0 mm

In the lab or on the production floor, the data you receive enables you to act quickly and decisively to enhance designs or correct problems. To learn more, contact Imagine Optic at +33 (0)1 64 86 15 60 or visit www.imagine-optic.com.